



# AUCTION

LEADING THE INDUSTRY SINCE 1945

Realtors • Auctioneers • Advisors

**SATURDAY – SEPTEMBER 19, 2020 – 9:30 AM  
REAL ESTATE SELLS AT 10:30 AM**

**Schaefer Family Trust – Selling For Family Of The Late Paul Schaefer**

**65 Acre Farm – Sold In Two Parcels – Randolph Twp. – Portage Co. – Family Owned For Approx. 130 Years**

**Parcel #1 – 10.2 Acres With Century Four Bedroom Two-Bath Farm Home With Attached Garage – 40 X 80 Steel-Truss Out-buildings – Etc. – 2/3 Tillable**

**Parcel #2 – 54.8 Acres – Mostly All Tillable – Gently Rolling Plow Land – Secluded Setting**

**Live & Online Bidding Available On Real Estate**

Tractors – Backhoe – Tools – Household – Furniture – Collectibles – Farm Primitives & Much More

Absolute auction, all sells to the highest bidders on location:

**2695 SHAFFER RD., ATWATER, OH 44201**

Directions: Take Rt. 224 just west of Rt. 44 in Randolph to Hartville Rd. and south 1.1 mile to Shaffer Rd. and west 1.1 mile to farm.

Watch for KIKO signs.



**Parcel #1** – 10.2 acres with all improvements including good 2-story alum. sided farm home. Attached oversize two-car garage – basement – main-level birch finished appliances eat-in kitchen with built-in china, main-floor laundry with washer & dryer – large dining room – living room – main-floor bedroom & fully remodeled shower bath – three bedrooms and full bath up – lots of storage built in – enclosed breezeway porch with skylights and patio doors to open deck, good cellar with modern FA LP gas furnace plus 150 amp breaker – fruit cellar and office area – 40 X 80 metal sided and roof shop and storage building with sliding door at side and end, part with concrete – other older chicken house, former milk house, etc – nice trees – garden area – stately country setting. Approx. 445' frontage on 10+ acres. 2/3 tillable. **Shown by appt. or open Fri. Sept. 18 – 3-5 PM.**



**Parcel #2** – 54.8 acres – small pond, mostly all tillable land – mostly drained productive soil – 328' frontage – add to your operation or start your own farm – secluded setting.

**Note:** Sold in parcels only. All mineral rights to transfer – very convenient location to Akron – Canton – Etc.

**TERMS ON REAL ESTATE:** 10% down auction day, balance due at closing. A 10% buyer's premium will be added to the highest bid to establish the purchase price. Any desired inspections must be made prior to bidding. All information contained herein was derived from sources believed to be correct. Information is believed to be accurate but not guaranteed. Property to be sold as Separate Parcels and not to be offered as an Entirety.



Information is believed to be accurate but not guaranteed. KIKO Auctioneers

**800-533-5456 | kikoauctions.com**





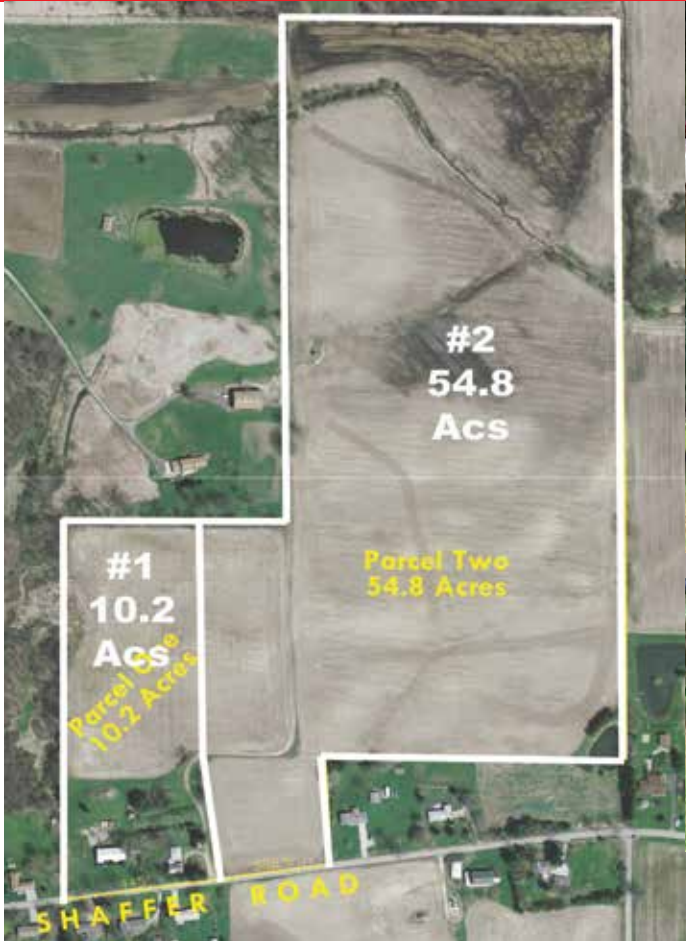


2722 Fulton Dr. NW, Canton, OH 44718  
kikoauctions.com

**Saturday – September 19, 2020 – 9:30 AM**

## 65 ACRE FARM – SOLD IN TWO PARCELS – PORTAGE CO.

Tractors – Backhoe – Tools – Household – Furniture – Collectibles – Farm Primitives & Much More



**Backhoe – Tractors – Equipment – Truck:** Case 480D Construction King backhoe with rops, shuttle, extra buckets – Cockshutt 30 tractor, NF – International 340 gas utility tractor with side mt. sickle mower – Ford 1310 diesel 3 pt. rebuilt motor – Cub Cadet zero-turn mower – 2 Co-Op E-3 tractors in parts – 3 pt. Landpride tiller – 3 pt. blade – 3 pt. carry all – 3 pt. 2B plow – 3 pt. 1R cultivator – set of cultivators for Cockshutt – Woods 3 pt. finish mower 5 ft. – 3 pt sub soiler – 1997 Chevy 1500 pickup, ext. cab, 4WD, auto, no reverse

**Tools – Hardware – Misc.:** T-post – rolls of woven wire – early reel mowers – garden planters – barrel butter churn – milk cans – early fencer – misc. hardware – hardware cabinets – misc. tools – drill bits – circular saw – power tools – shop vac – Craftsman toolbox – sockets – pipe wrenches – Blacksmith vise – 3 tackle boxes – Mikota trolling motor – Champion 5000W gas generator – elec. cement mixer – Troy-Bilt rear-tine tiller – loads of hardware – tools – early wall mt. drill press – saws – bench-top drill press – stack model toolbox – two battery chargers – chicken wire – air comp – double-shaft grinder – lawn tools

**Household – Antiques – Collectibles:** Formica-top kitchen table – four oak press-back chairs – misc. glassware – candy dishes – compotes – drinking glass set – oil lamp – glass baskets – tomato canister set – punch bowl – loads of early kitchenware – drop-front secretary – lighted curio cabinet – sev. dozen bird figurines – mat. sofa & love seat – round table with chairs – lighted china cabinet – painted wood ducks – pine washstand – bowl and pitcher – matching reclining sofa with love seat – two mat. oak curio front china cabinets – mirrored shadow box – corner cupboard – sev. dozen glass bells – sev. dozen dolls – Precious Moments – four pc. French Provincial bedroom suite – mat. slag glass lamps – small jewelry cabinet – costume jewelry – religious statues – sev. dressers and beds – bedroom furniture – cedar chest – maple dresser with mirror – Victorian dresser w/ mirror – quilt – 2 old cabinet sewing machines – early washstand – sev. flat-top trunks – bunk beds – early vanity – sev. new dolls in boxes – many boxes of Christmas décor – milk shake mixer – outdoor figures/ornaments – 4 boxes of trains, track, including Lionel – wrought-iron bakers rack – 4 outdoor patio swivel stools – globe – loads of Christmas figurines – early bottles – early press – woven baskets – old feed bags – coolers – vintage clothes some military/ Navy – wine caper – alum. kegs – dozen of canning jars – early dry sink – (3) 5-gal crocks – dozen of Avon bottles – sev. canes – golf balls – maple highchair – fish tank – church pew – metal folding chairs – sev. old sets golf clubs – onion basket – early barn lantern – runner sleds – railroad sign – live trap – chicken water – chicken nest – early ice box. Lifetime accumulation. Join us!

**TERMS ON CHATELLES:** Driver's license or State ID required to register for bidder number. Cash, Check, Debit Card, Visa, or Master Card accepted. 4% buyer's premium on all sales; 4% waived for cash or check. Information is believed to be accurate but not guaranteed. Multi Par auction process may be used. **Auction By Order Of:** Paula Chrobak and Patricia Jindra, Co-Trustees.



Auctioneer/Realtor®  
**RUSSELL T. KIKO JR.**  
330-495-0923  
rustykiko@kikocompany.com



Auctioneer/Realtor®  
**RUDY W. KIKO**  
330-540-2416  
rudykiko@kikocompany.com

**800-533-5456 | kikoauctions.com**

